

FEDERALLY DESIGNATED ANCHORAGES WITHIN THE PORT OF NANAIMO

1. There are six (6) deep-sea anchorages within the Nanaimo Port Limits for ships up to 300 metres. There is no restriction for the Northumberland Channel for arrival and departure. Canadian Hydrographic Charts #3447 and #3458 cover the anchorages.

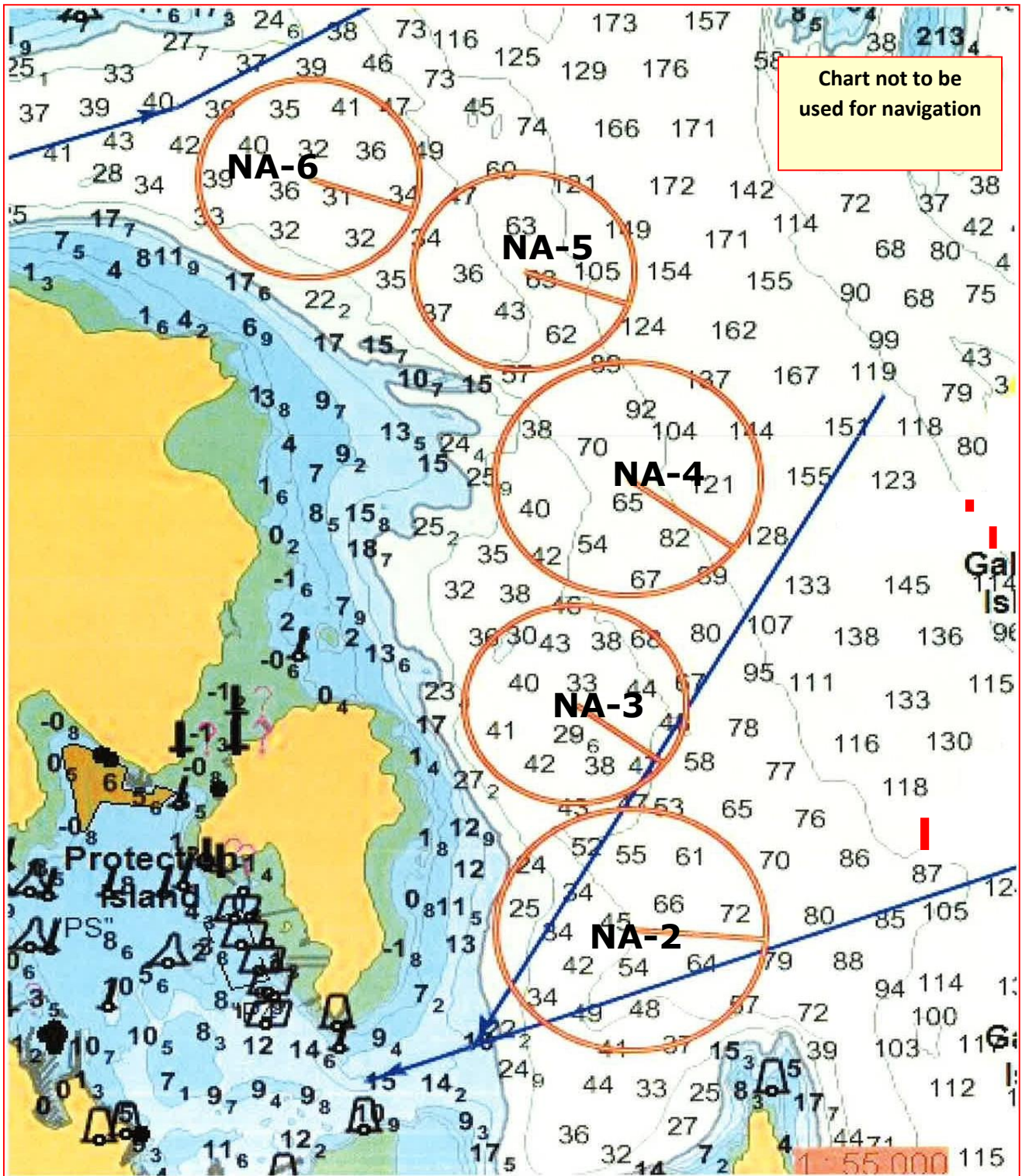
ANCHORAGES DESCRIPTION

Anch	Lat (n) / Long (w)	Position		Depth (m)/ Bottom	LOA (m)/ Radius (c)		Shackles
NA-1	49° 08.76' N / 123° 50.88' W	0.47 nm @ 223 T	Harmac East Dock South	55/sand	225	2.5	6
NA-2	49° 10.44' N / 123° 54.08' W	0.70 nm @ 250 T	Gallows Point Light	50/clay/sand	300	3	6
NA-3	49° 11.00' N / 123° 54.27' W	0.95 nm @ 214 T 1.24 nm @ 318 T	Gallows Point Light McKay Point	45/gravel/sand	225	2.5	6
NA-4	49° 11.57' N / 123° 54.09' W	1.00 nm @ 290 T	McKay Point	80/sand	300	3	8
NA-5	49° 12.09' N / 123° 54.44' W	0.73 nm @ 255 T	McKay Point	35/mud/gravel	225	2.5	6
NA-6	49° 12.32' N / 123° 55.17' W	1.0 nm @ 278 T	Jesse Island Light	35/mud/gravel	200	2.5	6

PRACTICES AND PROCEDURES

2. The Practices and Procedures for the Port of Nanaimo are to be adhered to at all times during the ship's stay.
3. Any ship involved in an incident causing injury or death (*including injury and death resulting from a person falling overboard from a ship*); damage or loss of to any property; a collision (*including hard contact by a ship with a dock, port facility, structure or construction site within the harbour*); a grounding; a fire on board a ship or in the vicinity of a ship; the discharge of a pollutant, shall immediately contact the Port Authority and soon thereafter, and in any event before the ship leaves the harbour, deliver to the Port Authority a written report giving full details of the incident.
4. While at anchor the following shall be adhered to:
 - a. Maintain at all times a deck watch comprising of one or more competent persons, one of whom shall be qualified in the use of a radio-telephone
 - b. Maintain at all times a listening watch on VHF channel **11** or **16**;
 - c. At all times have its engines on standby, ready for immediate manoeuvring and its second anchor ready to let go should the wind speed at the ship exceed **25 knots**;
 - d. The owner, master or other person in charge of a ship shall ensure that the ship's position is frequently checked by more than one recognized navigational method to confirm that the ship is not dragging its anchor.

CANADIAN HYDROGRAPHIC CHART #3447



PROPOSED NEW LOCATION

